

Crosby Ravensworth Parish Council
Emergency Plan
DRAFT November 2021

Plan Created – August 2018

Emergency Contacts(?remove)

Last Updated –

Review Due –

Contents

Section		Page
	Introduction & Objectives	3
1	Possible emergencies & Risk Assessment	4
2	Emergency Co-Ordinator Telephone Number	6
3	Temporary Places of Safety	6
4	Communication	7
4	Access to Villages for Emergency Vehicles	7
5	Helicopter landing sites	8
6	Emergency Planning Contact Numbers	8
6	Review and Update	9
Appendices		
A	Crosby Ravensworth Parish	10
B	Crosby Ravensworth Village Plan	11
C	Maulds Meaburn Village Plan	12
D	Reagill Village Plan	13
E	Access Roads to Parish subject to flooding	14
F	Environment Agency Flood Maps	15 - 19

1. Introduction

Emergencies happen.

This Emergency Plan covers the Crosby Ravensworth Parish Council Area, Crosby Ravensworth, Maulds Meaburn, Reagill and Oddendale.

There may be a time when you might be affected by an emergency but your life is not in immediate danger. During such a time, you will need to know how to help yourself and those around you.

The Parish Council has drawn up this plan to help deal with a major incident which may occur in the future.

The purpose of this Parish Council Emergency Plan is not to respond fully to a major incident but to increase resilience within the local community before, during and after emergencies, and to link into the County and District Councils', and emergency services 'emergency response structures if requested.

This Plan details ways in which our community could respond in an emergency situation while awaiting the assistance of statutory authorities/emergency services, or in support of them. It is not the job of the community to take on the responsibilities of these agencies e.g. to save life, to take any risks to themselves or to cope for long hours without agencies 'help and support

Objectives of this Emergency Procedure Plan:

- To establish a parish councillors community emergency co-ordinators 'rota that will coordinate the community response from a single point and liaise with the emergency services / local authorities as appropriate.
- To identify actions required to minimise the harm from identified hazards or threats.
- To establish a means of identifying vulnerable people in the community with a view to supporting them in an emergency.
- To identify resources in the community that could be available to minimise the severity of the emergency.
- To establish key contact details for the emergency services and local authorities, the Local Community Emergency Co-ordinators and key community resources. In the event of a major incident in or near, Crosby Ravensworth, Maulds Meaburn, Reagill & Oddendale Communities
- All major emergencies are dealt with by the Emergency Services, Local Authorities, Utility Companies and Voluntary Agencies in a combined response. In extreme conditions such as heavy snow, flooding or a major accident, there is the possibility that the emergency services and service providers may not be able to reach our community as quickly as needed.
- ***In such circumstances, the initial response may rely entirely on our local community.***

- The principal objective of the Plan is to identify the risks to the community and the actions that may be taken in response.
- An electronic copy of the Plan will be made available, via the Community Resilience Network, to the statutory agencies, local authorities and the emergency services and is available on the secure Cumbria Community Messaging System (CCMS).

1. Possible emergencies and risk assessment

1.1. The table below identifies the main types of emergencies that could have an impact on our community and how local emergency planning could help. Note (it is not intended to detail precise actions as this will vary according to circumstances and must be determined at the time.)

1.2. The Parish Council (***will utilise the local magazine; the Lyvennet Link, along with its website to post appropriate seasonal articles aimed at increasing awareness and preparation for emergency scenarios.) Do we?***

- Late Spring – Hot weather, thunder storms and flash floods
- Late summer – storms – increased rainfall and high winds, windblown trees, power cuts
- Early Autumn – winter preparation; vehicles / home / personal
- Early winter – Snow / ice / low temperatures / power outages

Type of Emergency	Potential risks	Actions to address those risks
Localised flooding following heavy rain	<p>Damage to property and possessions, potential risk to health, or life in extreme cases.</p> <p>Road closures and travel difficulties.</p> <p>Environment Agency Flood Maps (Appendix F)</p>	<p>Ensure up to date national advice is available to residents on areas at risk of flooding and precautionary measures that might be taken to minimise risk for example flood line.</p> <p>Encourage residents with internet access to sign up to Cumbria Community Messaging www.cumbriacommunitymessaging.co.uk</p> <p>Identify & highlight on the plan key installations at risk of flooding (e.g. electricity substations)</p> <p>Open up appropriate Place of Safety</p>

Mains electricity power failure during cold weather conditions	<p>Residents with no access to power for a prolonged period of time.</p> <p>Most vulnerable are those with only electric power, heat, and cooking facilities. Also older residents, the sick and very young are most at risk in cold conditions.</p>	<p>Encourage 'good neighbour' relationships.</p> <p>If asked encourage/assist vulnerable residents to check their eligibility and if applicable register on Electricity North West's database (whereby assistance can be offered in the event of planned or unplanned power loss)</p> <p>Open up appropriate Place of Safety for hot refreshments and information point.</p> <p>Assistance with transport.</p>
Heavy snow or widespread ice	<p>Inability of vulnerable residents to shop, collect prescriptions, attend surgery appointments, receive home help etc.</p> <p>Risk of falling.</p> <p>Road conditions inhibiting use of car</p>	<p>Encourage 'good neighbour' relationships.</p> <p>Volunteers where safe and able to assist with spreading salt/grit</p> <p>Volunteers where safe and able to assist with essential shopping/collection of prescriptions</p>
Storm damage, particularly fallen trees closing roads	<p>Disruption to essential travel, prevention of access for emergency services</p>	<p>Contact land owners / Cumbria County Council and report damage.</p> <p>Encourage 'good neighbour' contacts to assist where safe.</p>
Fire	<p>Danger to health (smoke inhalation) particularly vulnerable persons and those with respiratory issues.</p>	<p>Encourage 'good neighbour' relationships</p> <p>Arrange for support if necessary.</p>
Loss of all communication (Phones / broadband / mobile)	<p>Inability to contact Emergency Services in case of need</p>	<p>Encourage 'good neighbour' relationships</p> <p>Set up temporary place of shelter as a place for people to get together and share available knowledge.</p>
Epidemic (infectious disease) Pandemic	<p>Community as a whole and particularly more vulnerable residents</p>	<p>Follow Local and National Public Health Guidance.</p>

Heat extreme event	Danger to health (older age residents / infants / those with chronic or severe illness / outdoor workers / asthma attacks associated with thunderstorms)	Prolonged temperatures above 30°C daytime and 15°C night-time Follow Local and National Public Health Guidance Raise awareness of community, highlight symptoms, light clothes, increase fluids, sunscreen.
--------------------	--	--

1.3. In the event of an emergency situation affecting all or part of the Parish where life is in danger or emergency support is required the initial action is to telephone 999. Follow instructions given by the emergency services or local authority and support using information included in this plan.

1.4. Primary or secondary contact to make contact with each other to agree to instigate / trigger the Parish Emergency Plan and determine actions require as a result.

1.5. If contact with Cumbria Police, Fire and Rescue Service, Ambulance Service or NHS Trust is not possible or the response is likely to be substantially delayed, the Emergency Plan will be implemented until help arrives. The Emergency Services will be informed that the Emergency Plan has been implemented and will be Co-ordinated from any Temporary Place of Safety instigated. In addition the Emergency Plan may be implemented at the request of the Emergency Services and activities will be undertaken under their direction.

1.6. There may be opportunities for early instigation of the plan before an emergency situation develops. In such circumstances the parish councillors will agree early instigation / triggering of plan and actions to be undertaken.

1.7. Once the decision has been taken to instigate / trigger the Parish Emergency Plan the Lead Coordinator will convene at Crosby Ravensworth, Maulds Meaburn or Reagill Village Halls as appropriate. A plan will be formulated depending on the nature of the emergency which may include organising working parties/gathering equipment/ opening temporary places of safety etc. This will then be relayed to the affected residents. In the event of a major incident each Emergency Co-ordinator will be allocated an area and endeavour to keep the residents in that area informed.

1.8. In all cases the safety of coordinators, volunteers, and working parties will be of the highest priority. It is not their role to endanger themselves or others.

2. Parish Councillor Emergency Coordinator telephone number / Pager number (Propose pager due to the poor telephone signal)

3. Temporary places of safety

3.1. Details of accommodation that would be suitable for people, including casualties, requiring temporary shelter until help arrives are shown below.

Location	Post Code	NGR	Key Holder Name + Address	Telephone Number
Crosby Ravensworth Village Hall	CA10 3JP	NY620147	Key Holder	01931 715381
Maulds Meaburn Village Institute www.mmvi.org.uk	CA10 3HN	NY625161	Key Holder	01931 715441
Reagill Village Hall	CA10 3ER	NY603174	Key Holder	01931 715320

3.2.

3.3. Location Plans for Temporary Places of safety can be found at Appendix B,C and D

3.4. Community Resources and access

3.5. There is a Defibrillator on the side of The Butchers Arms.

Organisation	Name	Telephone Number
First Responders	Accessible via 999 only Emergency phone and public access defribulator at Maulds Meaburn Village Institute	
Crosby Ravensworth School	School Office	01931 715265
Butchers Arms Pub	Landlord	01931 715500
St. Lawrence Church	Responder 1 AB Responder 2 DG	01931 716001 01931 715348

4. Communication

These are services that can be called upon to inform members of the Parish

Group	Contact Name	Contact Number
Parish Website	Parish Clerk	clerk@crosbyravensworthparishcouncil.org.uk

BBC Radio Cumbria	96.4 FM	Text 81333 – start message with CUMBRIA Traffic Line 0345 305 3939 Switchboard 01228 592444
Cumbria FM	102.5 FM	01228 810444
Cumbria Crack		www.cumbriacrack.com
Crosby Ravensworth Facebook page		
Mauldes Meaburn Facebook page		

5. Access to villages for Emergency Vehicles

Access to the main villages of Crosby Ravensworth, Maulds Meaburn and Reagill can be particularly challenging during snow and heavy rainfall / flood events.

Snow – The road from Shap – Crosby Ravensworth – Maulds Meaburn – Kings Meaburn – Bolton / Cliburn is treated as a Priority 2 by Cumbria County Council Highways. Sections of this road are prone to heavy drifting in strong winds.

Flooding (see Plan Appendix E) – The following sections of road become impassable other than by tractor in major flood events

- Crosby Ravensworth to Shap C3054
 - Railway Bridge just East of Shap (NY564154)
 - Between Trainriggs and Castlehowe Scar (NY579156)
- Crosby Ravensworth to Maulds Meaburn C3058
 - alongside the church and primary school (NY621147 to NY622151)
 - Junction with Silver Street (NY622148)
- Dalebanks Lane (NY619146 to NY617145) and (NY613142 to NY610139)
- Maulds Meaburn to Kings Meaburn C3058
 - Alongside Meaburn Hall (NY624169 to NY623172)
 - Littlebeck (NY624198)
 - Between Littlebeck and Junction with C3058 (NY625199 to NY623205)
- Kings Meaburn to Bolton / Cliburn C3058
 - NY612235

The best accesses to villages in severe flooding

1. Crosby Ravensworth – via Shap - C3054 – in all but the most severe flooding events
2. Crosby Ravensworth – via the unnamed road from Little Strickland and Wintertarn
3. Maulds Meaburn – via Appleby to Orton Road - C3060 from B6260
4. Reagill – Via Shap and Green Lane - C3054 to U3246

6. Helicopter Landing Sites

Helicopter landing sites have been identified in the 3 main villages and location plans can be found in Appendix B, C and D. Details are also provided on ground conditions in wet weather.

7. Emergency Planning Contact Numbers

(? Pager)

Name/ Contact	Role	Contact Number
Emergency Services	Police/ Ambulance/ Fire	999 Non-Emergency 101
Local Police Station		Police, Carleton Hall, Penrith 0300 124 0111
Cumbria County Council	Emergency Planning Penrith Fire Station Carleton Ave., Penrith	01768 812500 Emergency.planning@cumbria.gov.uk
	General	www.cumbria.gov.uk
	Highways Hotline	0300 303 2992 www.cumbria.gov.uk/roads-transport
Eden District Council		01768 817 817

Environment Agency	Floodline (24hrs) Incident Hotline (ask for Penrith incident room or Flood Duty Officer for Cumbria)	0345 988 1188 www.gov.uk/flood 0800 807060
NHS Direct	Urgent Medical advice	111 www.nhs.uk
Doctor	GP Primary Care Centre	Contact 111 or your own GP practice for access to GP services.
Hospitals	Penrith Kendal Carlisle	01768 245 300 01539 732 288 01228 523 444
Electricity NW	Electricity Network	105 0800 111999 www.enwl.co.uk
United Utilities	Water Company	0345 672 3723 www.unitedutilities.com
Health & Safety Executive		0345 3009923 www.hse.gov.uk

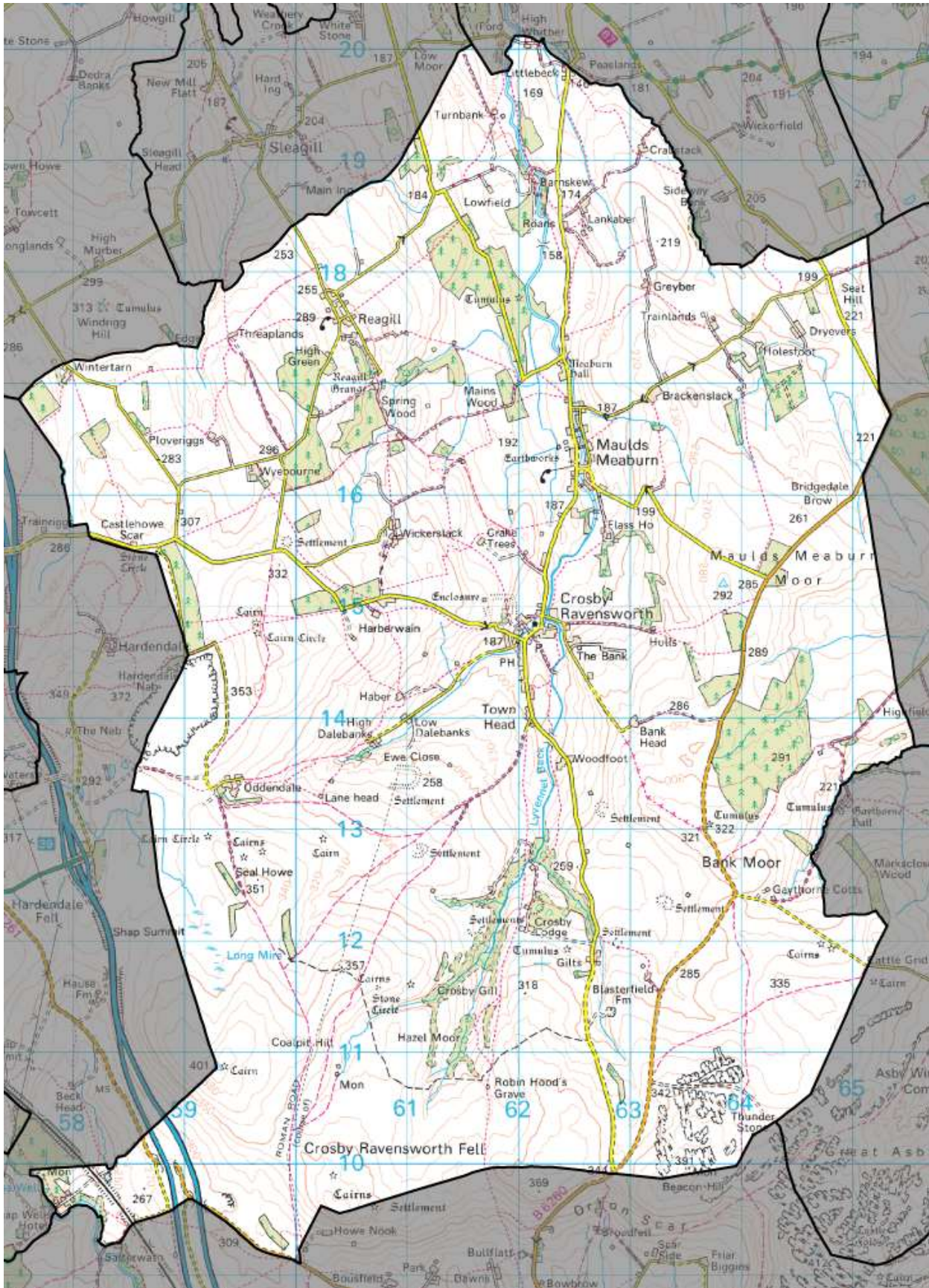
Plan review and update

In order to keep this plan up to date, contact lists will be revised as needed and the plan reviewed annually or after a critical incident where the plan has been used.

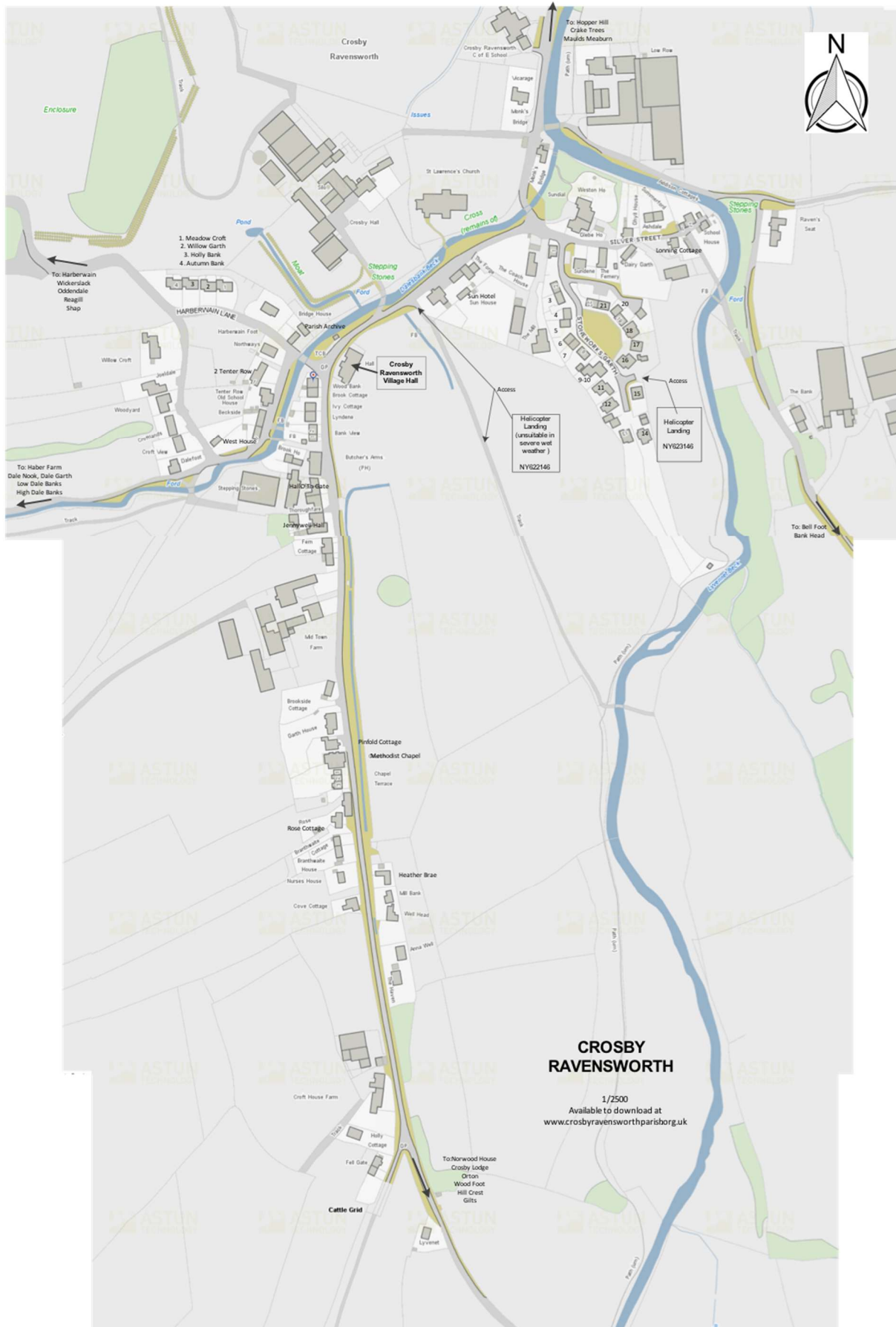
3.6. Hard copies of this document will be issued to all Emergency Coordinators.

3.7. The Plan will be uploaded to the Cumbria Community Messaging system where it can be accessed by all relevant agencies.

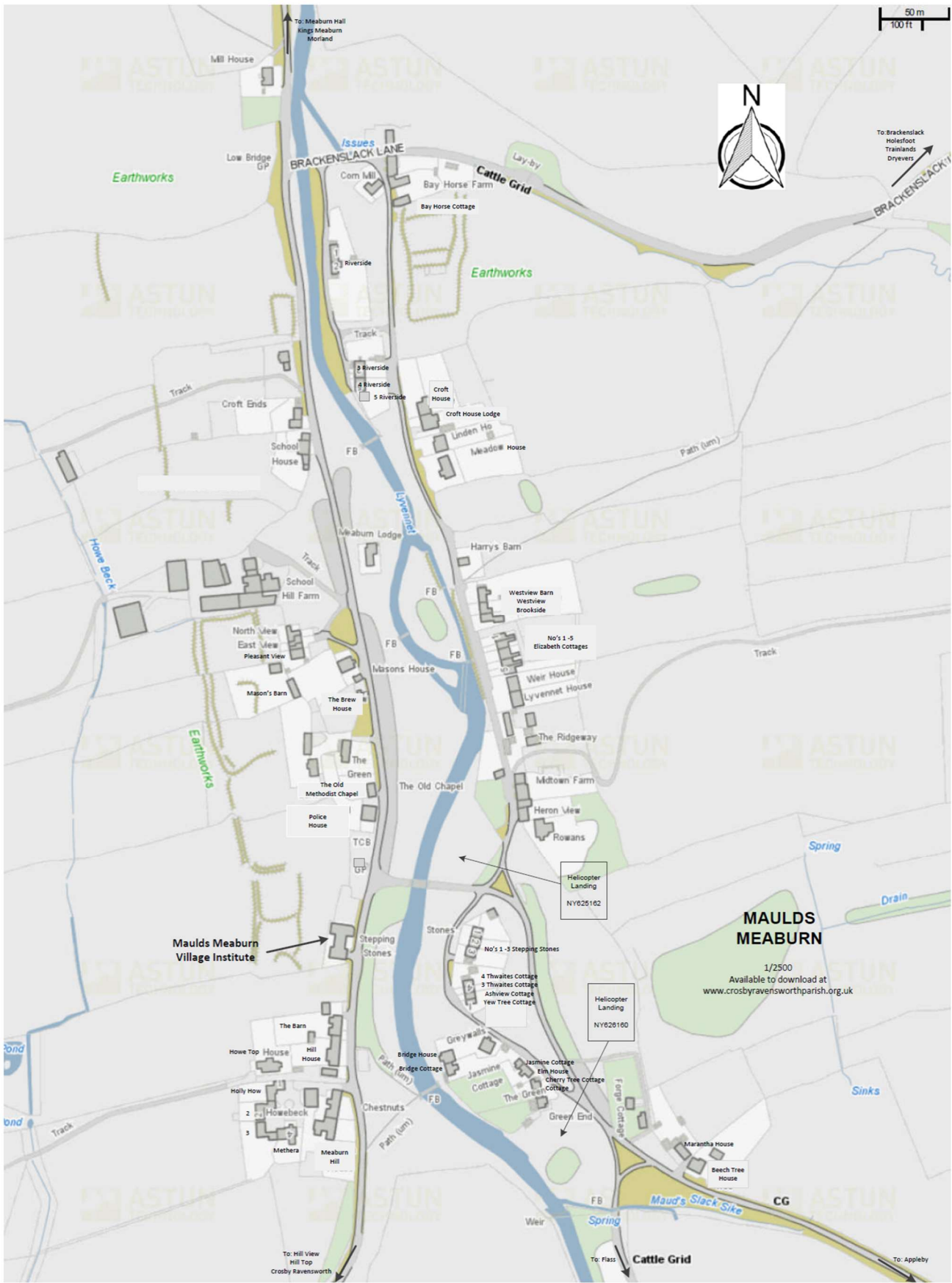
Appendix A – Crosby Ravensworth Parish



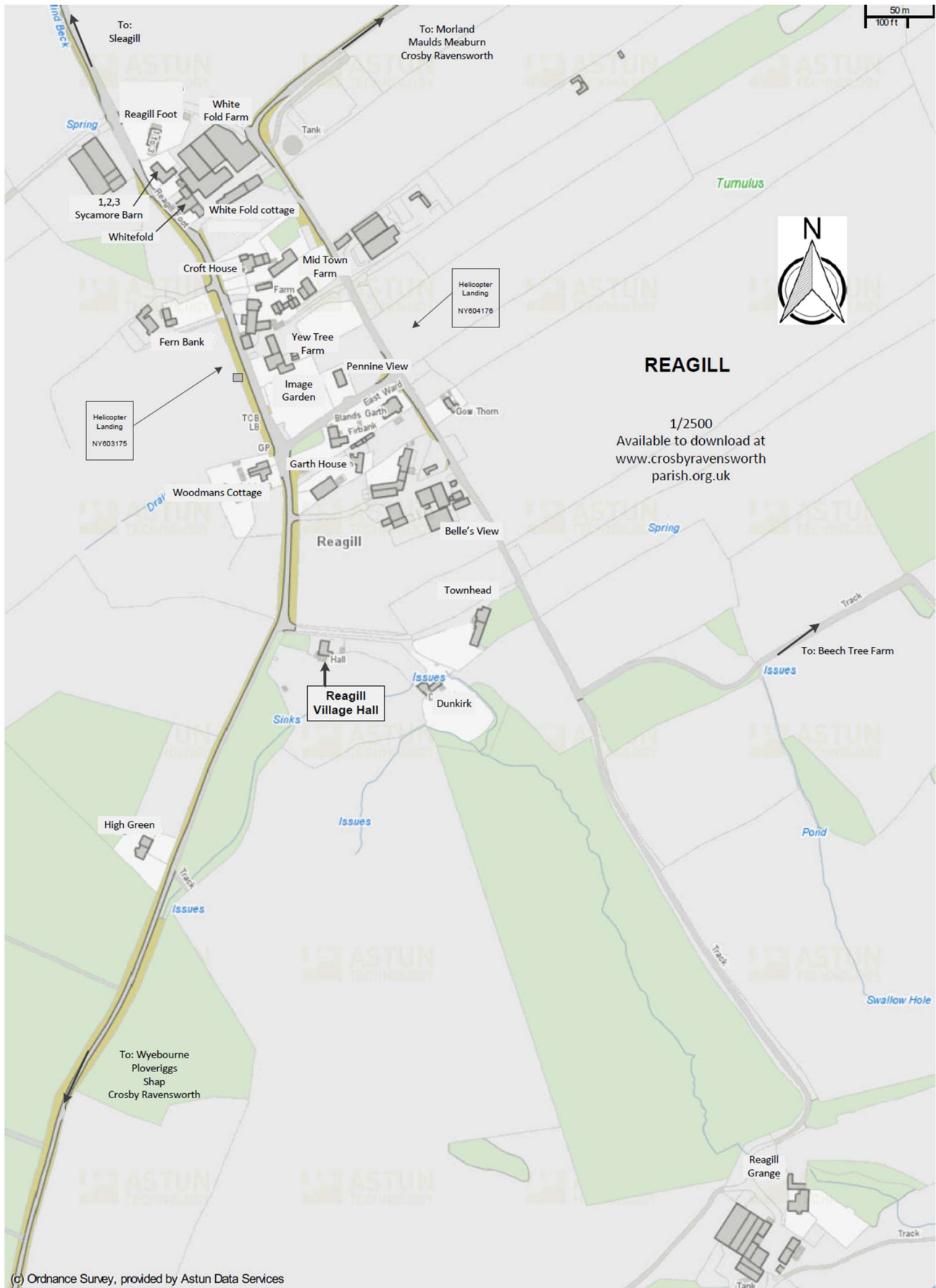
Appendix B – Crosby Ravensworth Village Plan



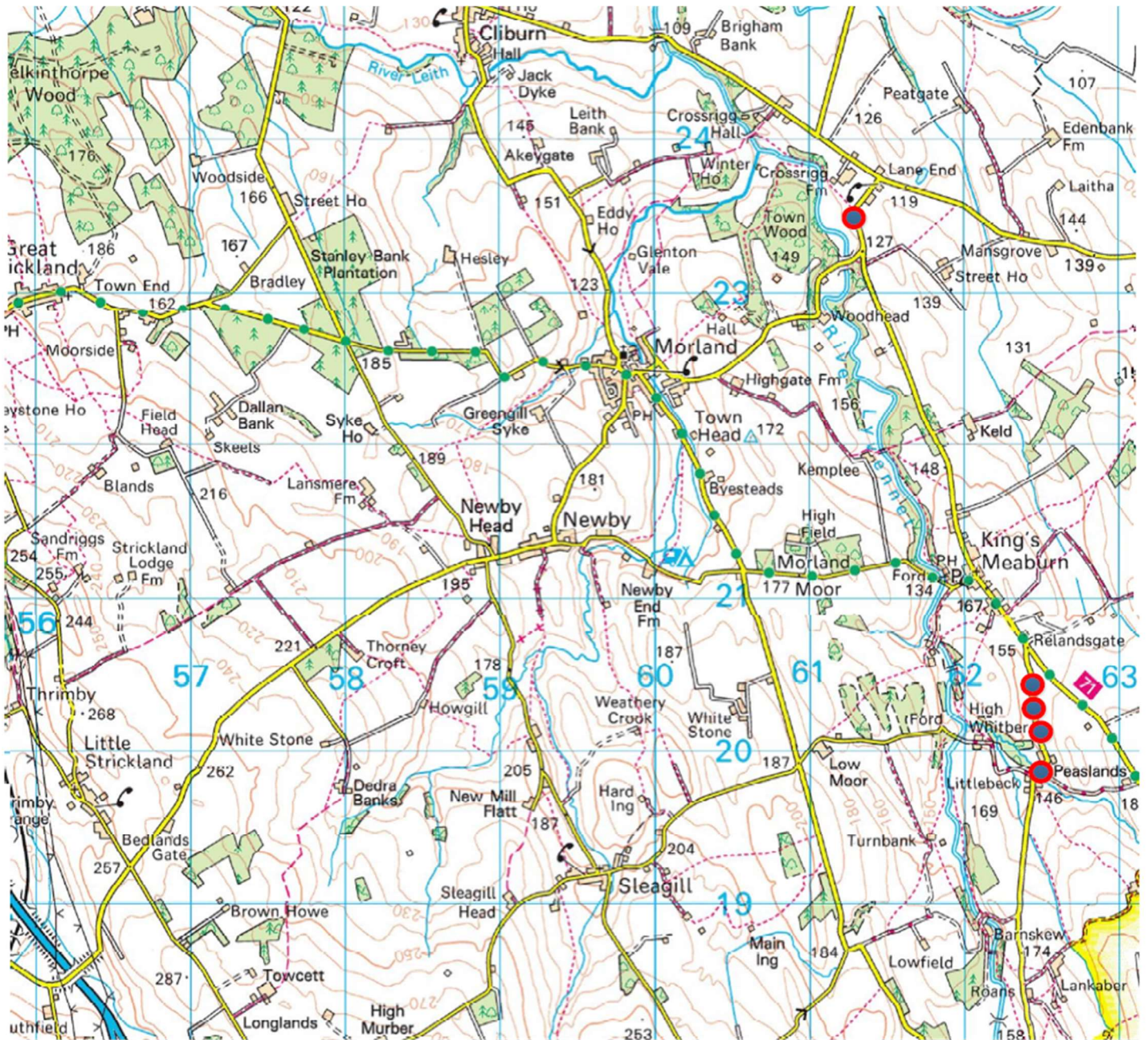
Appendix C – Maulds Meaburn Village Plan



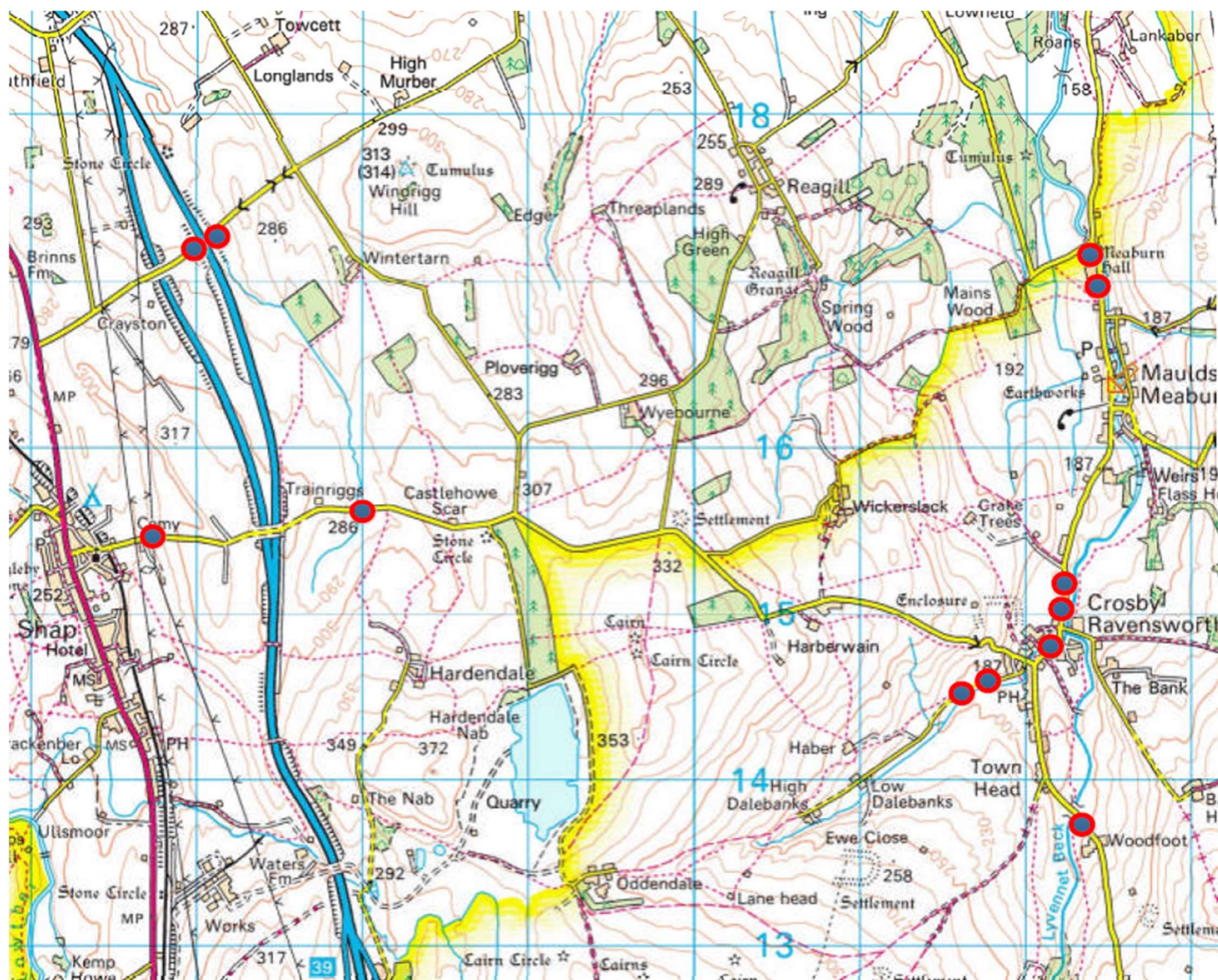
Appendix D – Reagill Village Plan



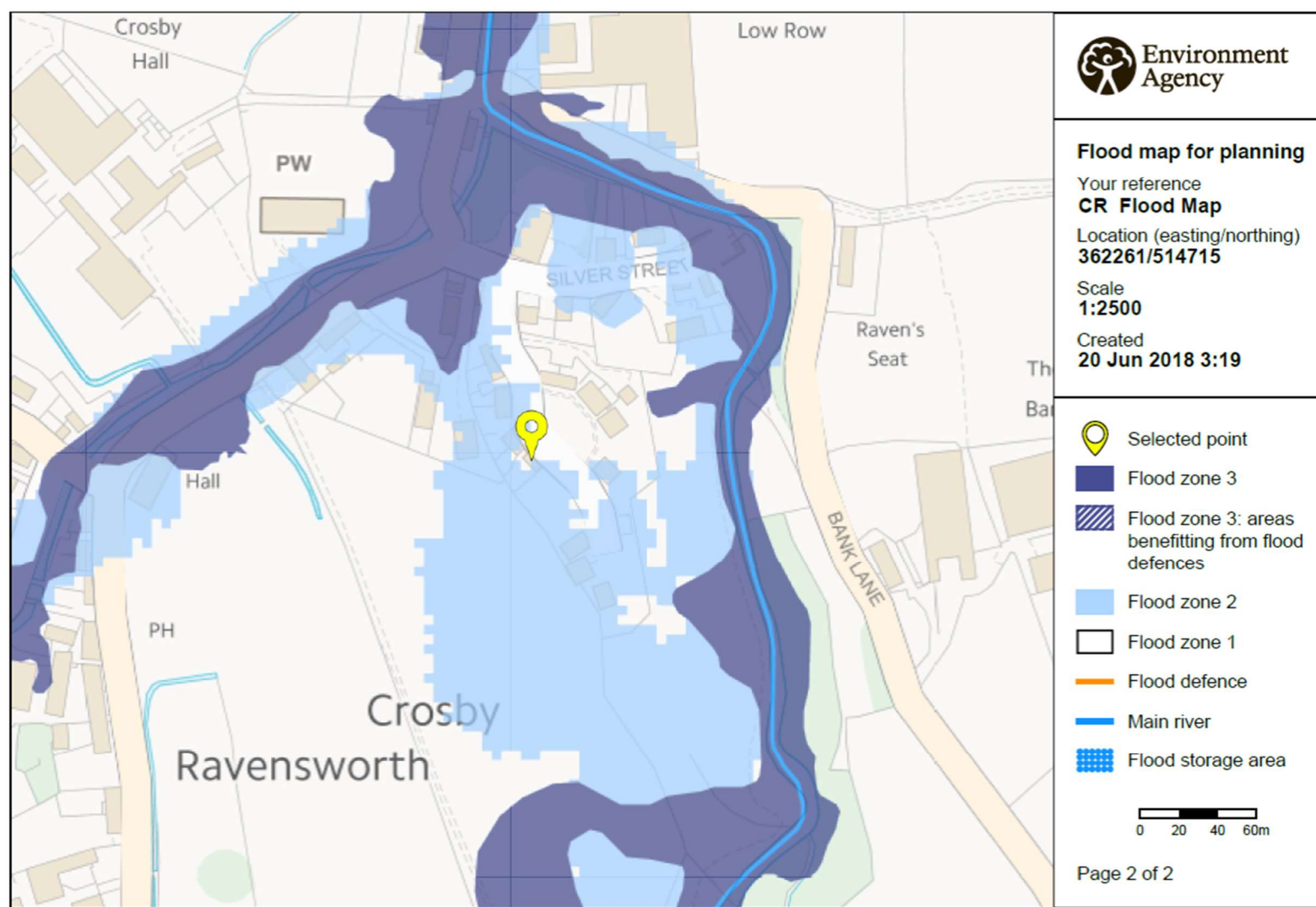
Appendix E – Access Roads to Parish subject to flooding



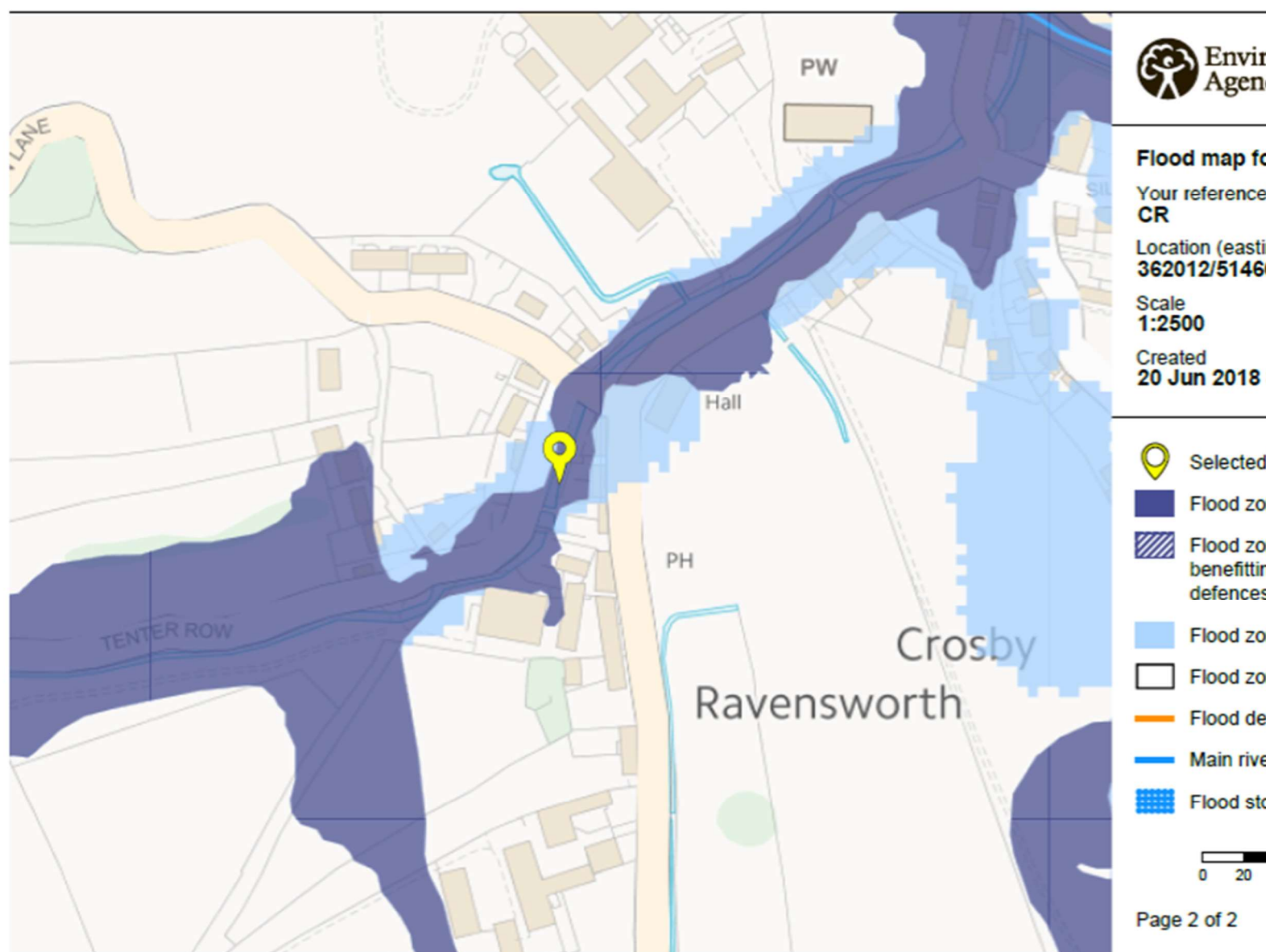
Road areas prone to flooding



Appendix F – Environment Agency Flood Map Extracts



© Environment Agency copyright and / or database rights 2018. All rights reserved. © Crown Copyright and database right 2018. Ordnance Survey licence number 100024198.



© Environment Agency copyright and / or database rights 2018. All rights reserved. © Crown Copyright and database right 2018. Ordnance Survey licence number 100024198.



Flood map

Your reference

MM FLO

Location

362555

Scale

1:2500

Created

20 Jun



Se



Flo



Flo

be

de



Flo



Flo



Flo



Ma



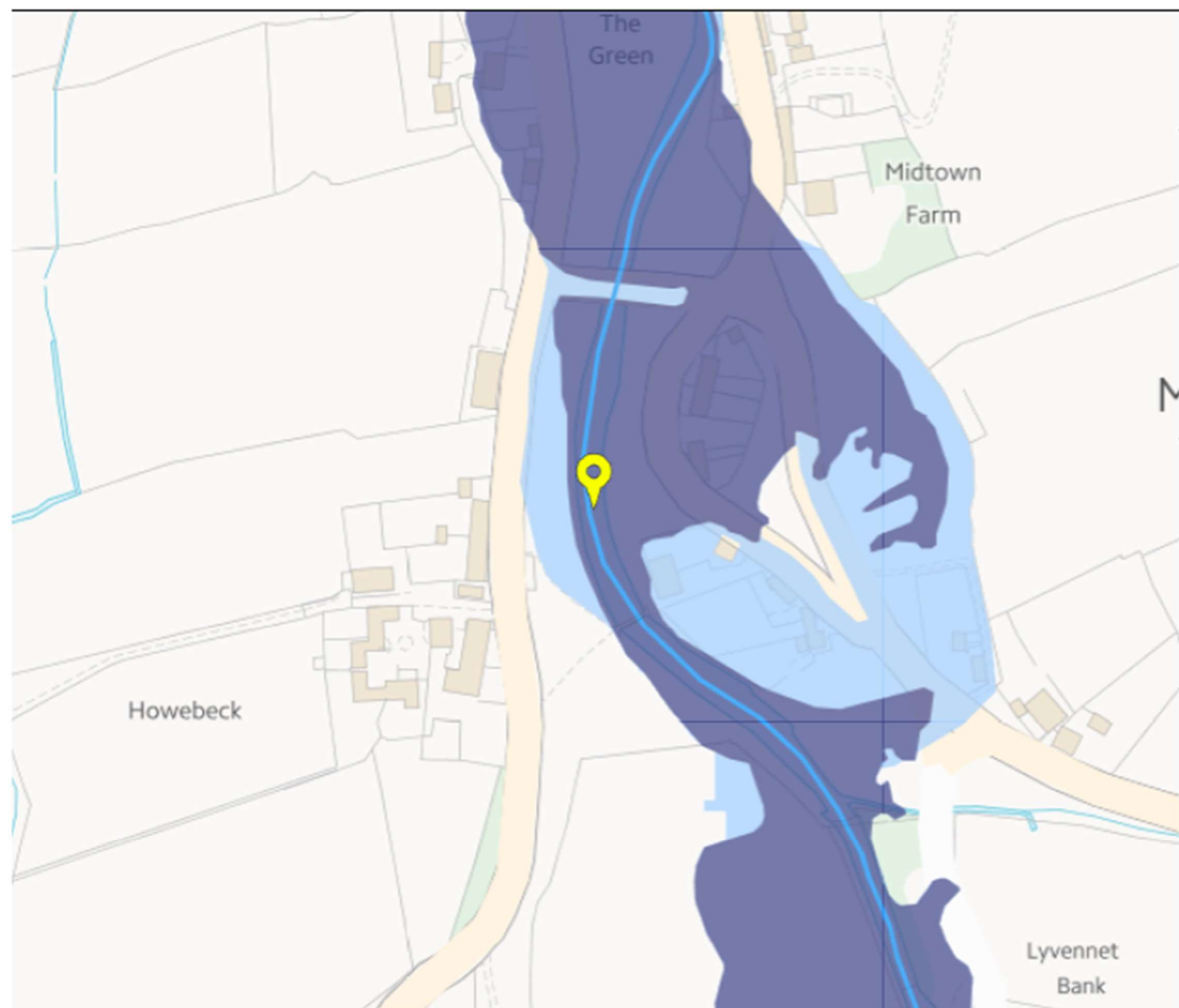
Flo



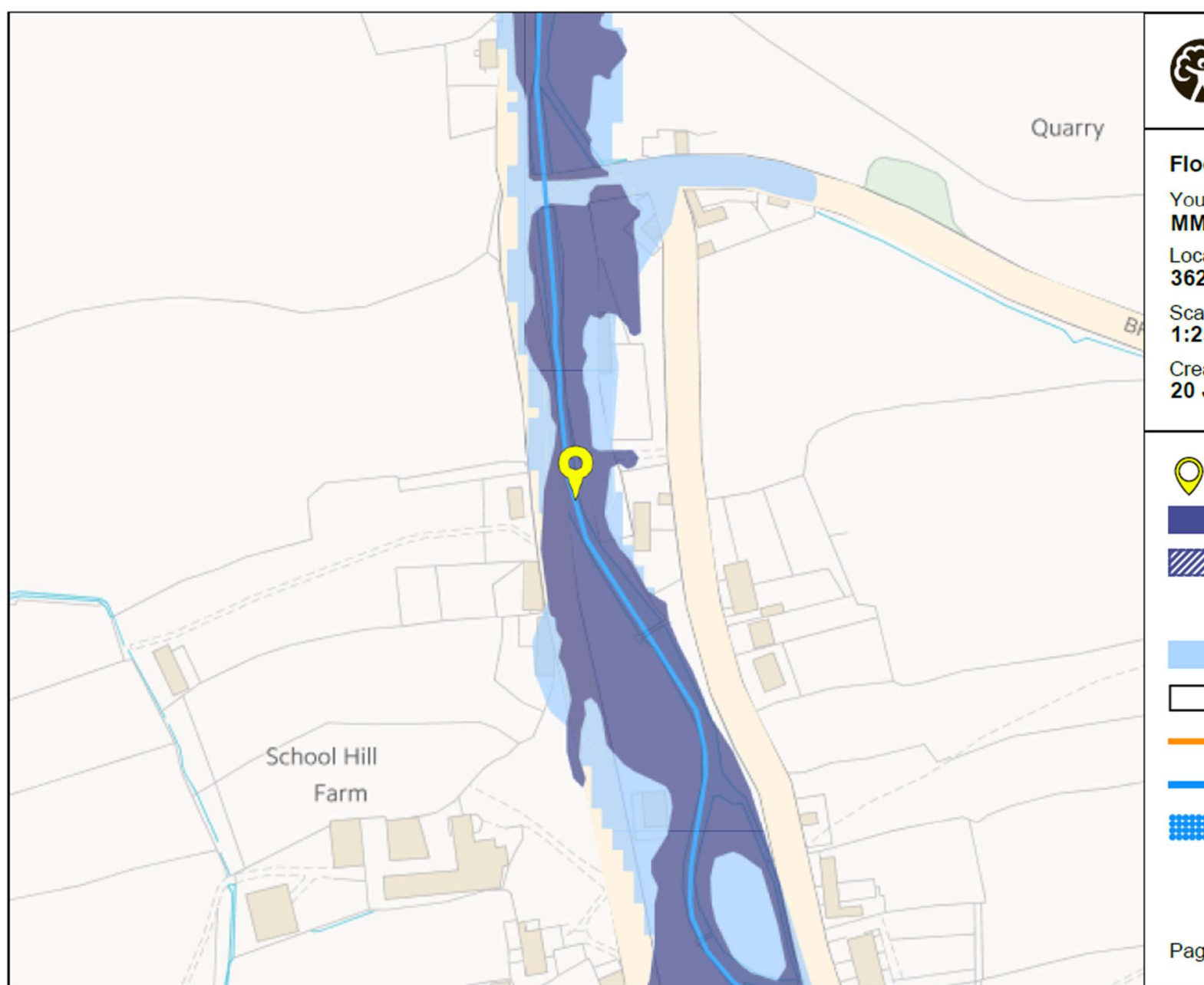
D

0

Page 2 of 2



© Environment Agency copyright and / or database rights 2018. All rights reserved. © Crown Copyright and database right 2018. Ordnance Survey licence number 100019322



© Environment Agency copyright and / or database rights 2018. All rights reserved. © Crown Copyright and database right 2018. Ordnance Survey licence number